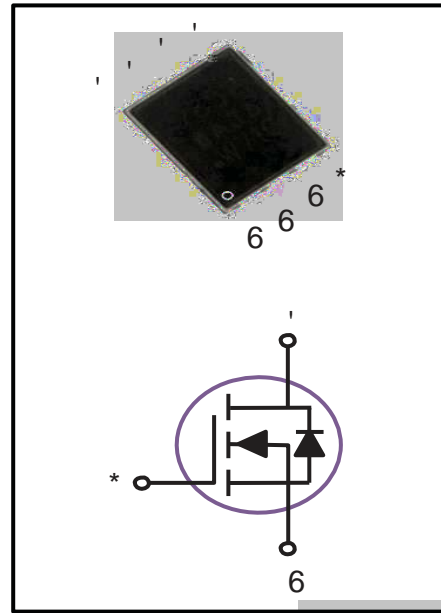


9 1 & KDQQHO 026) (786 % :

33\$. ; 3LQ & RQILJXUDWLRQ

% 9'66	5'621	,'
9	P:	\$

) HDWXUHV
z 65V,95A, RDS(ON) P # 9 * 6 = 10V
z Improved dv/dt capability
z Fast switching
z Green Device Available
\$ SSOLF DWLRQV
z Networking
z Load Switch
z LED applications



0\$; ,080 5\$7,1*6 \$1' & +\$5\$&7(5,67,&6

f & \$PELHQW 7HPSHUDWXUH XQOHVV RWKHUZZLVH QRWHG

3DUDPHWHU	6\PERO	5DWLQJ	8QLWV
'UDLQ 6RXUFH 9ROWDJH	9'6		9
*DWH 6RXUFH 9ROWDJH	9'6	"	9
'UDLQ & XUHQW ±&RQLQXR XV 7	'		\$
'UDLQ & XUHQW ±&RQLQXR XV 7	'		\$
'UDLQ & XUHQW ± 3XOVHG	;'0		\$
6LQJOH 3XOVH \$YDODQFKH (QHUV\	(\$6		P-
6LQJOH 3XOVH \$YDODQFKH & XUHQW	,\$6		\$
3RZHU 'LVVLSDWLRQ 7	3'		:
3RZHU 'LVVLSDWLRQ ±u'HUDWH DERYH	3'		: u
6WRUDJH 7HPSHUDWXUH 5DQJH	767*	WR	u

2SHUDWLQJ -XQFWLRQ 7HPSHUDWXUH 5DQJH v WRW



9 1 & KDQQHO 026) (786 % :

026)(7 (/(&75,&\$/ &+\$5\$&7(5,67,&X OHVV RWKHUZLVH VSHFLILHG

3DUDPHWHU	6\PERC	&RQGLWLRQV	0LQ	7\S	0D[8QLW
'UDLQ 6RXUFH %UHDNGRZQ	9.6	9 ' , X\$				9
'UDLQ 6RXUFH /HDNDJH &XUUHQW	9.6	9 ' 9 ' .7 u				X\$
'UDLQ 6RXUFH /HDNDJH &XUUHQW	9.6	9 ' 9 ' .7 u				X\$
*DWH 6RXUFH /HDNDJH &XUUHQW	9.6	" 9 ' 9 ' 9			"	Q\$

2Q & KDUDFWHULVWLFV

6WDWLF 'UDLQ 2Q XHVLVWDQFH	9.6	9 ' , \$				P:
	9.6	9 ' , \$				P:
*DWH 7KUHVKROG 9ROWDJH 9.6 WK	9.6	9.6 ' , X\$				9
)RUZDUG 7UDQVFRQGXFWDQFH	9.6	9 ' , \$				6

'\QDPLF DQG VZLWFKLQJ & KDUDFWHULVWLFV

7RWO *DWH &KDUJH	4J					
*DWH 6RXUFH &KDUJH	4JV	9.6	9 ' 9 ' , \$			Q &
*DWH 'UDLQ &KDUJH	4JG					
7XUQ 2Q 'HOD\7LPH	7G RQ					
5LVH 7LPH	7U	9.	9 ' 9 ' 9			QV
7XUQ 2II 'HOD\7LPH	7G RII	5.	: ; \$			
)DOO 7LPH	7I					
,QSW &DSDFLWDQFH	&LVV					
2XWSXW &DSDFLWDQFH	&RVV	9.6	9 ' 9 ' 9) 0+]			S)
5HYHUVH 7UDQVIHU &DSDFLWDQFH	&LVV					
*DWH UHVLVWDQFH	5J	9.6	9 ' 9 ' 9) 0+]			:

'UDLQ 6RXUFH 'LRGH & KDUDFWHULVWLFV DQG 0D[LPXP 5DWLQJV

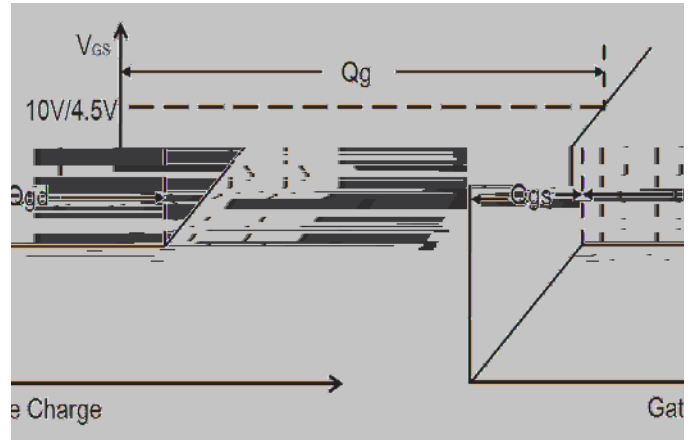
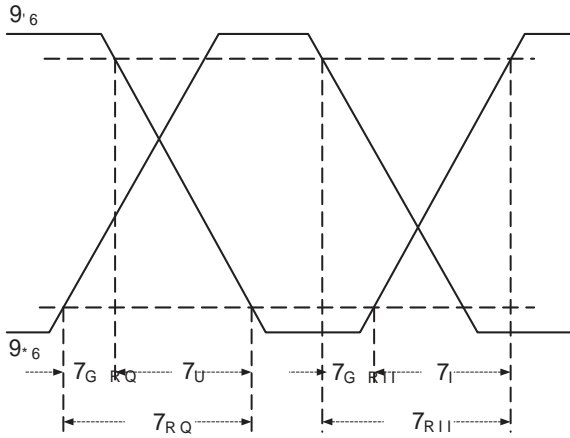
3DUDPHWHU	6\PERC	&RQGLWLRQV	0LQ	7\S	0D[8QLW
&RQLQRXV 6RXUFH &XUUHQW	9.	9 ' 9 ')RUFH &XUUHQW				\$
3XOVHG 6RXUFH &XUUHQW	9.6					\$
'LRGH)RUZDUG 9ROWDJH	9.6	9.6	9 ' 6 , \$.7 u			9
5HYHUVH 5HFRYHU\7LPH	WU	9.5	9 ' 6 , \$			QV
5HYHUVH 5HFRYHU\&KDUJH	4UU	GL	GW \$ -V 7			Q &

1RWH

5HSHWLWLYH 5DWLQJ 3XOVHG ZLGWKPSHFLDWHXGUB\ PD[LPXP MXQFWLRQ
 9 9 9.6 9 / P 9.6 , \$ 5 : 6WDUWLQJ 7
 7KH GDWD WHVWHG E\ SXOVHG SXOVHFXZLGMK
 (VVHQWDOO\ LQGHSHQGHQW RI RSHUDWLQJ WHPSHUDWXUH



9 1 & KDQQHO 026) (786 % :



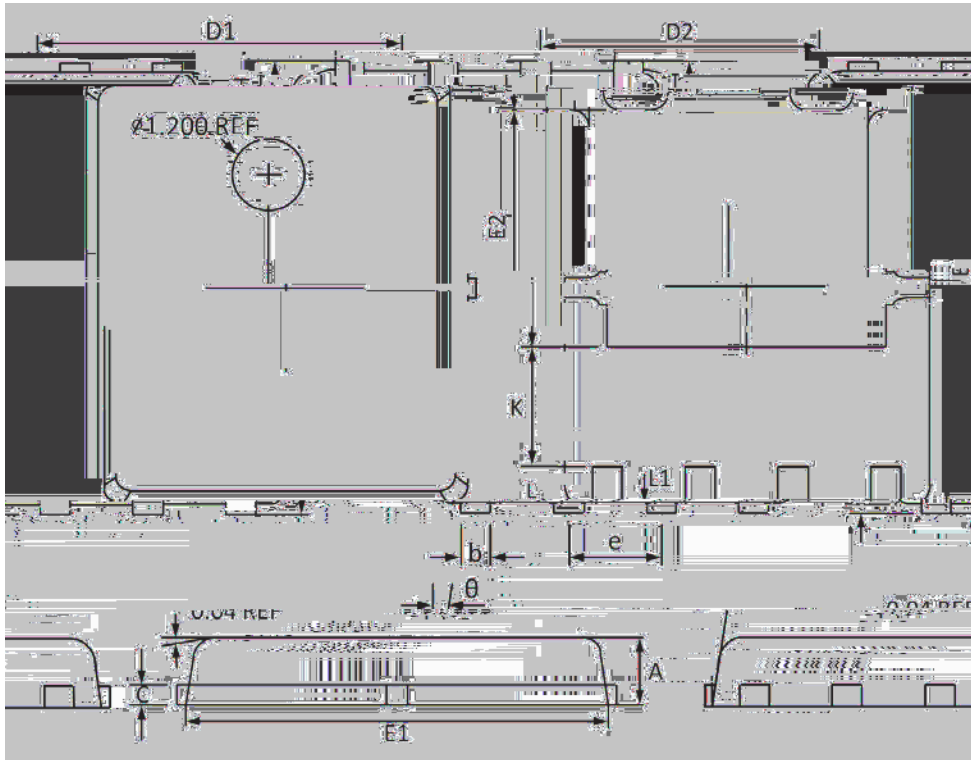
)LJ 6ZLWFKLQJ 7LPH :DYHIRUP

)LJ *DWH &KDUJH :DYHIRUP



9 1 & KDQQHO 026) (786 % :

33\$. ; 3\$&.\$*(,1)250\$7,21



6\PER	'LPHQVLRQV ,Q 0	LOOLPHWHUV	'LPHQVLRQV
	0\$;	0,1	0\$;
\$			
E			
&			
'			
'			
(
(
(
H		% 6	% 6 &
+			
.			
/			
/			
	<i>f</i>	<i>f</i>	<i>f</i>